

DAVIDSON & SMITH
ATTORNEYS
LAW, LAND AND LIVE STOCK
OZONA, TEXAS

March 29th, 1932,

Hon. J. H. Walker,
Commissioner of General Land Office,
Austin, Texas,

Dear Sir:-

Mrs. Maggie Schneemann of San Angelo, Texas, is widow of Wm. Schneemann Jr. who purchased all the lands of his father Wm. Schneemann, who go to make up the Schneemann Ranch situate about 20 miles N.W. of Ozona.

It seems that some parties believe that a survey of State University Lands will leave a vacancy between the West Lines State University Blocks 50 and 51 and the East line of Block 9, D. & S.E. Ry. Co. We know of our own knowledge that any such prospective vacancy would be in the Schneemann pasture, occupied by the Schneemanns for at least 15 years continuously last past and now controlled and owned by the aforesaid Mrs. Maggie Schneemann. We have been attorneys for the Schneemanns every since the came to the Country, and we have found them to be most excellent people. Naturally we would like to guard their interest under the law as intelligently as we can, and Mrs. Schneemann is expecting us to do so. It is very hard for this Office or any one else perhaps to tell how the Courts will construe new land legislation. We are sure that it must be a great agrivation to the Commissioner of General Land Office, for that Office for many years has tried hard to settle titles of school lands. Obviously it is not only good law but good common sense to extend the boundaries of school surveys to include adjoining vacancies, and in forwarding you the three sets of field notes here inclosed our County Surveyor has done the best he could to figure on the width of such vacancy if any, and he says that he will keep in close touch with the University Surveyors and promptly make any corrections necessary to conform with the results of the University's Surveyors work. We hope with this explanation that you will see your way clear to file these field notes in their respective files. When recently we forwarded two other and different field notes for this same party we wrote you that we did not know whether you required a dollar filing fee ordinarily required for filing field notes. We are waiting to hear from you with your bill if any.

Very truly,

DAVIDSON & SMITH,

BY

Houston Smith

MAR 31 1932

REFERRED TO LAF

Counter 19952

d

File No. Sketch File 95

Crockett

Corresp. & Sketches Blks. A, BB, YZ, WX, Blk. 29,
Unit. Lands. **County**

Filed _____ 19 32-36

GARRY MAURO, Com'r

By (Douglas Howard)

June 13, 1933

Judge J. P. Hill,
San Angelo, Texas

Dear Sir:

On May 19th., I wrote to Mr. H. L. George of San Angelo, returning to him field notes for subdivisions of section 28 Blk 66 Tsp 7 T&P Ry Co lands in Culberson county. This was done in order that they might be recorded in the records of the county surveyor of that county.

In my letter to him, I requested that the matter be given prompt attention, and as I have not heard from him, nor received the field notes, I am writing to request that the matter may have his attention at once. Will you kindly call his attention to this, in order that these files may have final attention, and given over to the patent department?

Very truly yours,

Commissioner

Blucher:emb
128704-139160

cc: Mr H L George,
San Angelo

d
Crockett co. SK F. 95

Counter 19954

(2.)

Crocket Co. Rolled Sh. "RC-2"
Field Notes
Letters & Various Correspondence
By Frank F. Friend & Others
Filed from 1932 - 1936

Counter 19955

DAVIDSON & SMITH
ATTORNEYS
LAW, LAND AND LIVE STOCK
OZONA, TEXAS

September 12th, 1933,

Hon. J. H. Walker,
Commissioner of General Land Office,
Austin, Texas,

Dear Sir:-

Mrs. Maggie Schneeman wants to pay out and patent the following lands in Crockett County, Texas,

Survey Blk.	Certificate	Grantee	Purchaser	File	Ltd.	Page
2	76	G. W. T. Ry. Co.	Wm. Schneeman Jr.	98727	81	281
2	A 1615	B. S. & F.	"	98726	141	231
50	BB 99	T. C. Ry. Co.	"	98724	141	231
6	SF8271	Wm. Schneeman Jr.	"	111971	91	486

Kindly advise in whose name the patent will issue and if new field notes will be required. If there is excess in these surveys she would like to have patent issued with the excess.

We are not familiar with the surveying, but think that perhaps she has had some surveyed and new field notes returned, but are not sure about this. This was possibly done by the Late Wm. Schneemann Jr. about four or five years ago.

Very truly,

DAVIDSON & SMITH,

By *Houston Smith*

RECEIVED

SEP 15 1933

REFERRED TO LAW

d²

February 16, 1934

Honorable Geo. T. Wilson,
San Angelo,
Texas.

Dear Judge Wilson:

I have made extensive personal investigations of the Beatty application for a vacancy in Crockett County. The conclusion reached by me as to the relative position of the blocks involved, if Mr. Simpson is correct as to the location of Block 1 lying over Live Oak Creek, is shown in the sketch marked A which is enclosed.

The correct position of Block 1 on the ground in no way affects the position of Block Q as surveyed by S. A. Thompson. Bonnell's calls for Block 1 in the field notes of his surveys in Block Q could not have the effect of pulling Block Q away from its original moorings. Thompson's Block Q contains seven sections. It must take its position from its anchorage of Block 29 University Land as Thompson determined the location of this block.

Sketch B in pencil shows Block Q in its relation to University Block 29 as Thompson located them. Thompson's connecting calls for the sections in his Block Q are all to the northwest corner of Block 29, as shown by Sketch B. There is nothing on the ground, according to my information, to change this location. Thompson appears himself to have run the connecting lines to establish the relation between Block 29 and Grierson Springs, Fort Lancaster and the southeast corner of Section 7, Block WX. 7 has a well-marked corner. Exhibits C and D show Thompson's connections.

Sketch E in pencil shows the relation of Thompson's Block Q to his Blocks BB and Block YZ. It is clear that the common corner of Sections 9, 10, 67 and 68 in Block BB was placed by Thompson nine miles West of the southwest corner of Section 16, Block 51, University, as the same would be determined by course and distance from the live oak corner. (The northeast of 7 Block WX) which was established by Thompson. Again we have the common corner of 1, 2, 7 and 8 in Block YZ nine miles west of the South east corner Section 35, which was established by Thompson as being eight miles south of Section 16 Block 51, which latter line would run through the live oak corner. Regardless

#2- Hon. Geo. T. Wilson- Feb. 16, 1934

of where the southwest corner of 51, University, actually is, the corner of it taken by Thompson is three miles north of the live oak corner.

Sketch F in pencil shows Thompson's Block Q as enlarged by Will Bonnell. The Bonnell sections, riding astride Thompson's sections, cannot be thrown off by any sort of bucking process. Bonnell calls for the Thompson blocks to the East and for Block 1 to the West.

Sketch G in pencil shows that Bonnell made a complete "fill in" between Thompson's Block Q and Thompson's Blocks BB and Block YZ. If you will permit the expression, Bonnell's addition rides knee to knee with Thompson's BB's.

The Walker and the North surveys which lie between Bonnell's Block Q and one of Thompson's BB blocks appear to have been put in on the theory that the live oak corner was due south of the Northwest corner of Section 7, Block 50, University. You will recall that Bonnell made a connection between the Northwest corner of Block 29 University, and this Section 7. There might be room for the Walker and the North if the theory of the locator (Bonnell) had been correct, but actually on the ground these surveys instead of being West of the BB's, lie on them.

As stated, I am not able to see how the Beatty survey can be approved. From my viewpoint if Block 1 surveyed by Barton takes its position according to either Simpson or Goodfellow, it would not pull Block Q with it. Block Q was run by Thompson on a variation of 10 degrees, while Block 1 appears to have been run on a variation of 12 degrees. That Simpson and Goodfellow established Block 1 in the different positions is clear to my mind. I am enclosing photostat of Goodfellow's sketch for you to compare with Simpson's if you so desire. With the field notes of Number 1 Barton appears to have adopted the sketch attached to the application. Enclosed for your information is a copy of it. R. M. Thomson wrote the field notes for both Block 29 University and Block 1. He signed the University field notes, but H.C. Barton signed the field notes of Block 1.

With best wishes, for you and yours, I am

Sincerely yours,

JHW-
S.F. 25100

Commissioner

Crockett Co. Sk. F. 95

Counter 19958

d 4

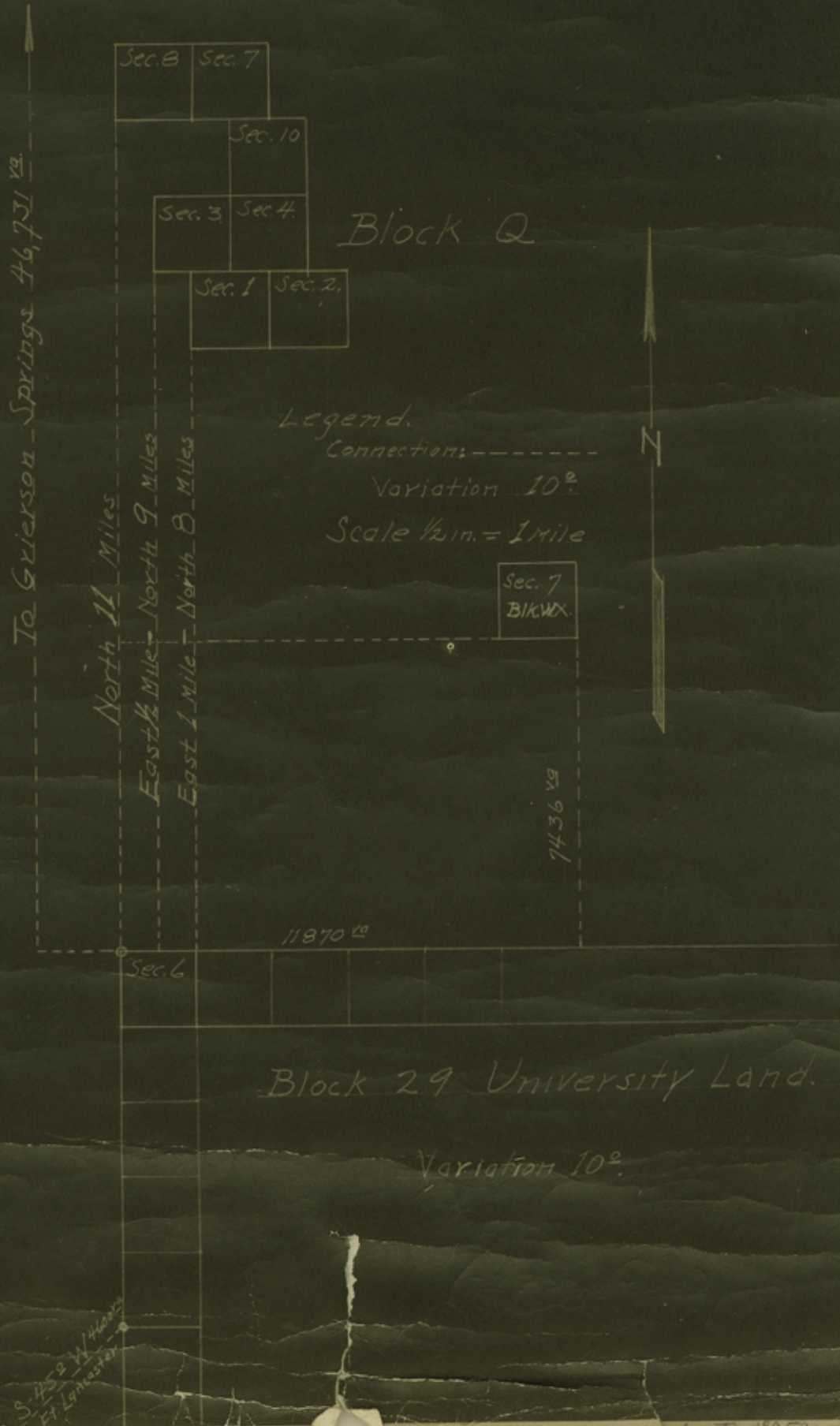
B

Showing Connections of Block Q
As Surveyed & Returned By
S. A. Thompson.

7 sections

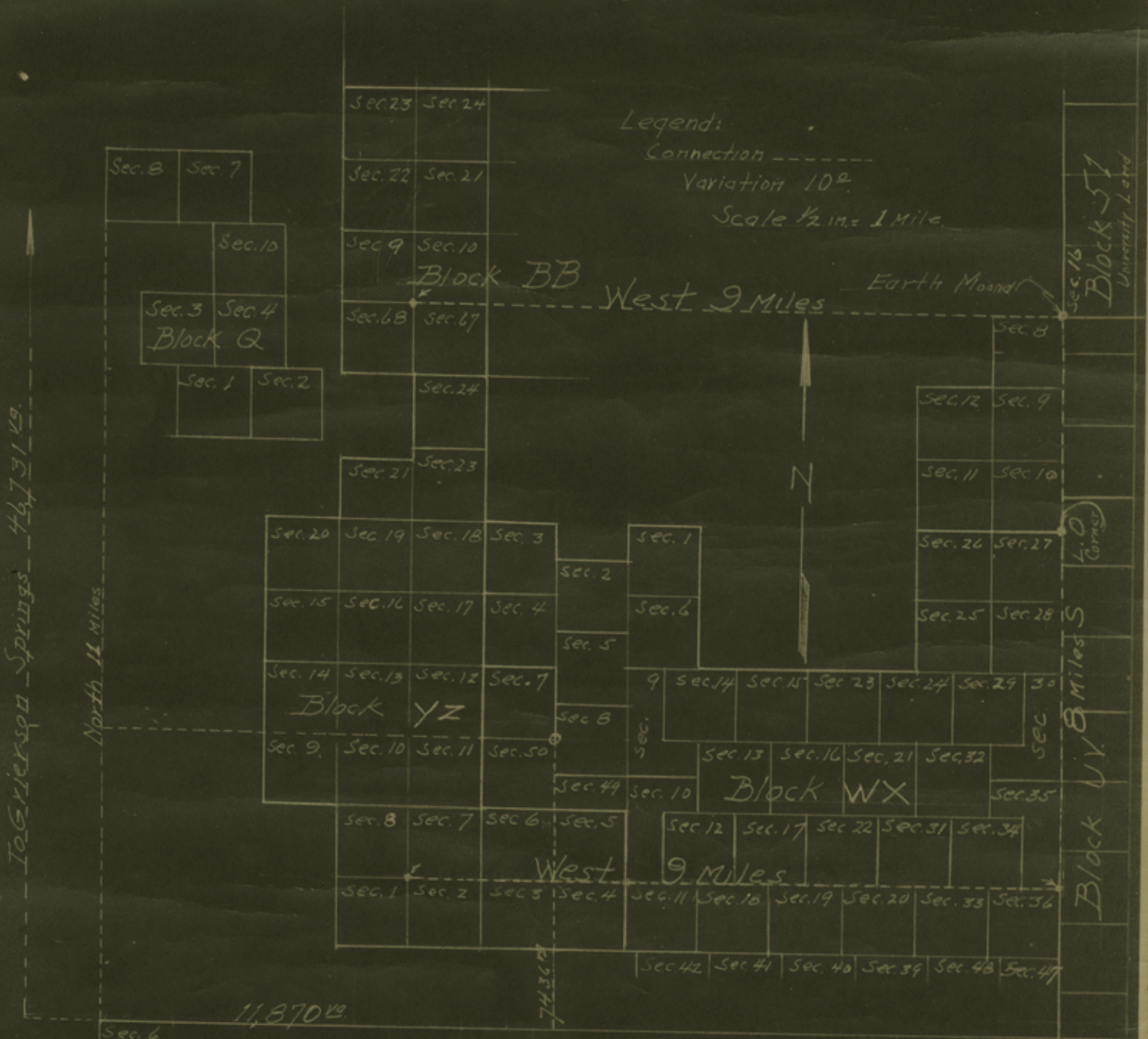
Also-

Showing connection of
Blk. 29 University to Grierson
Springs, Ft. Lancaster and
Sec. 7 - Blk. WX.



E

Showing The Relation Of
Thompson's Block Q To His Blocks BB^{9th} YZ.

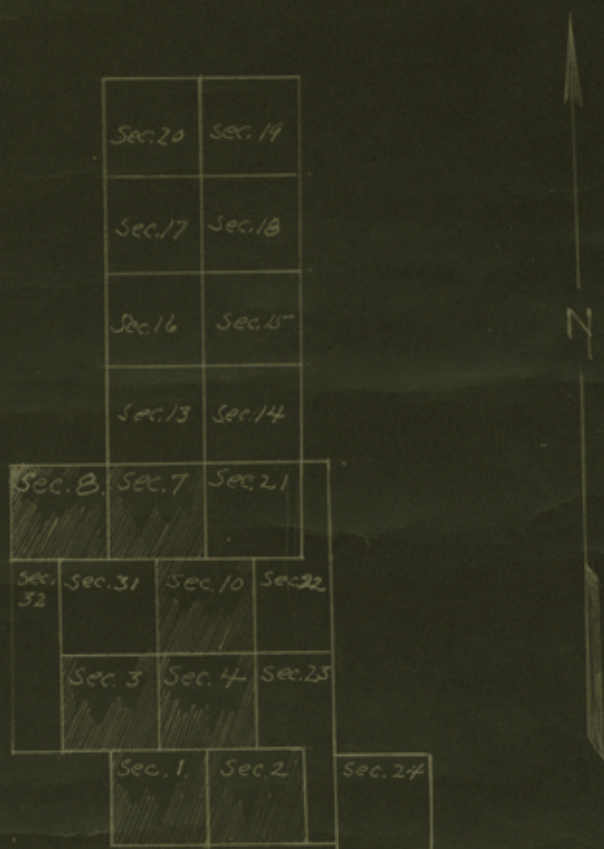


Block 29 University Land.

J

Showing Sections Added By Bonnell
To Thompson's Block Q.

The Added Sections Also Tie To Block I
On The West and BB and
YZ On The East.



Block Q.

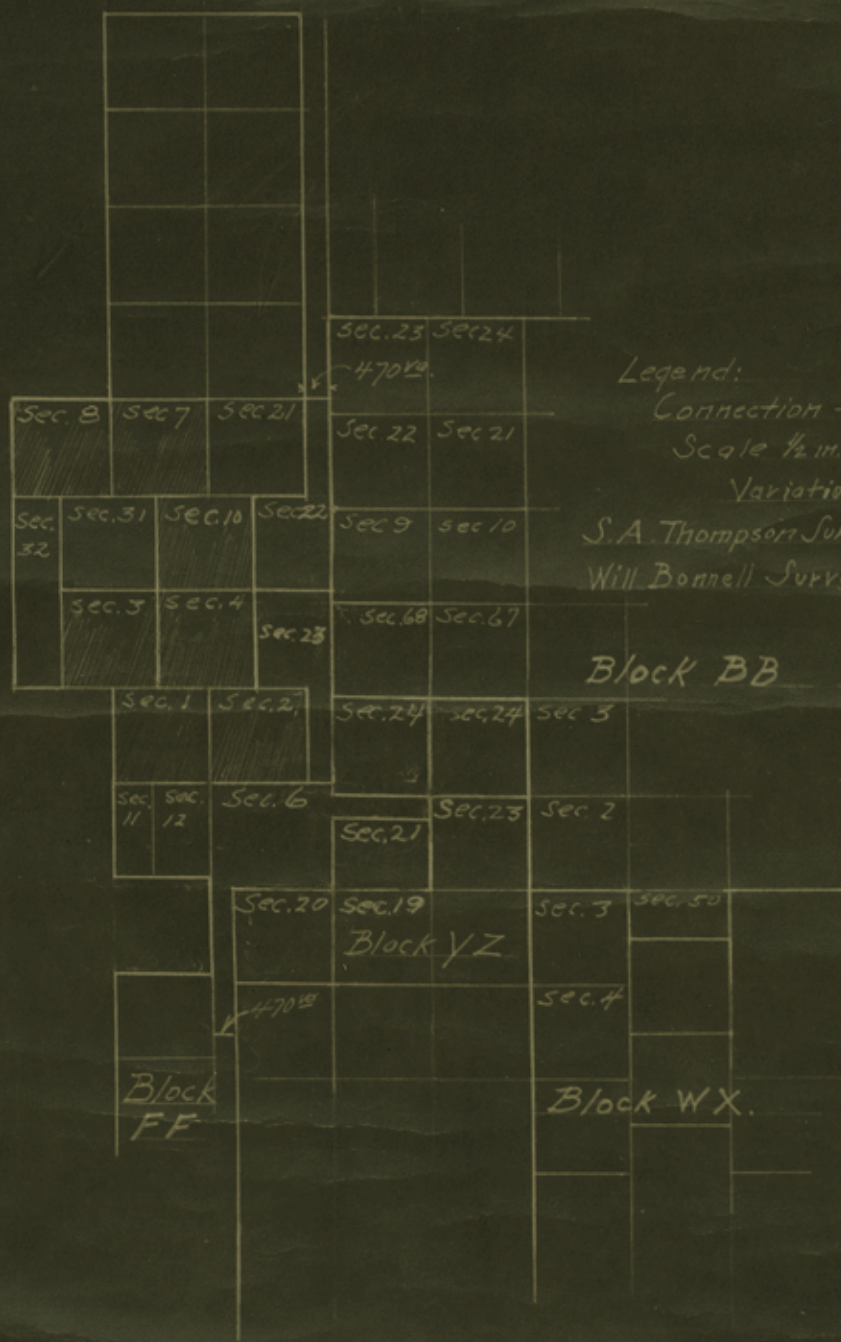
S.A. Thompson Surveys Shaded.

Scale $\frac{1}{2}$ in. = 1 mile

Variation 10° .

Ly

Showing Bonnells "Fill-in" Between
Thompson's Blocks Qnd BBnd YZ.



Legend:

Connection - - - - -

Scale 1/2 in. = 1 Mile.

Variation 10°.

S. A. Thompson's Surveys Shaded.

Will Bonnell Surveys Not Shaded.

Block BB

Block YZ

Block FF

Block WX.



75 661

(2) Crockett Co. Rolled sk. "RC-2"
Field Notes, Letters, & various Correspondence
By Frank F. Friend & Others
Filed from 1932-1936

Crockett Co. Sk F. 95

950
Counter 19963

d9