

Seymour Baylor Co Texas

No 2.

January 31<sup>st</sup> A.D. 1884

Field notes of a connecting line made in  
Hall County. Variation 11°

Beginning at an earth mound with a Buffalo  
head set in said mound being 24625 vrs

North & 1058 vrs E of the assumed N. W. corner  
of Survey No 51 for F. P. Knott on North bank

of North Pease River (see former connecting  
lines for distance) Thence from said

mound N. 69 $\frac{1}{4}$  E. 524 vrs. N. 56 $\frac{1}{2}$  E. 440 vrs,

N. 77 $\frac{3}{4}$  E. 680 vrs to two Gypsum rocks, one  
marked 'I' established for an assumed

N. W. corner of B&O N. & S. W. R. R. Thence  
East at 2260 vrs cross Rustlers creek,

course North at 4220 vrs a pile of rocks on  
ravine. Thence North at 268 vrs a pile of

rocks and a mesquite stake marked.

N. W. <sup>(the S.W. corner of No 44 of Knott's survey)</sup> at 2048 vrs cross Rustlers creek

course East at 2500 vrs point. Thence East  
at 1760 vrs cross Rustlers creek course N. E.

at 3900 vrs, branch course N. E. at 5800 vrs  
stake from which the stump of a wild

lehnia tree standing in a ravine and  
about 16' in dia brs. N. 28 E. 50 vrs a wild

lehnia tree 6' in marked  $\times$  and fallen down  
brs N. 9 W. 20 vrs. This is the N. W. corner of

survey No 783 made for N. & S. W. R. R. Co, and  
is 900 vrs, South of S. bank of Red River,

continuing East at 100 vrs, cross Ravine at  
1520 vrs, cross Baylors creek, course North

at 1900 vrs, point. 420 vrs South of S. bank

This remark has  
been inserted by me  
E. W. Pyles

of Red River.

The course of Baylor creek was found to agree with the calls as given in field notes of Surveys Nos. 782, 783, and 784

The large China Tree called for in field notes has been lately cut down, but is the only tree of any size within a mile of the assumed corner of survey No 783.

We hunted for the N.W. corner of Survey No 796 in a large open plain with no trees near but could find no indication of it.

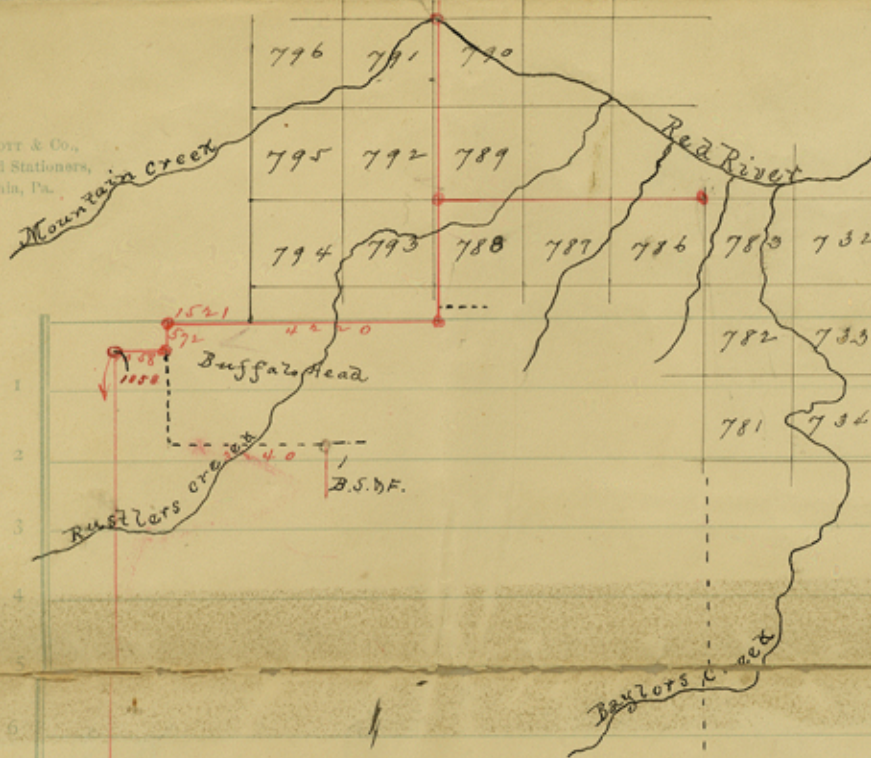
The country is covered with large mounds made by prairie dogs.

R. Montgomery }  
S. Humphries } chain carriers

I, Saml. L. Chalk, Surveyor Baylor Land District, do hereby certify that the foregoing surveys was actually made in the field and according to law, and that the limits boundaries and corners with marks both natural and artificial are truly described in the foregoing plat and field notes and that they were actually found on the ground, in the positions described, and are recorded in my office in Book A No 2 pages 70 & 71.

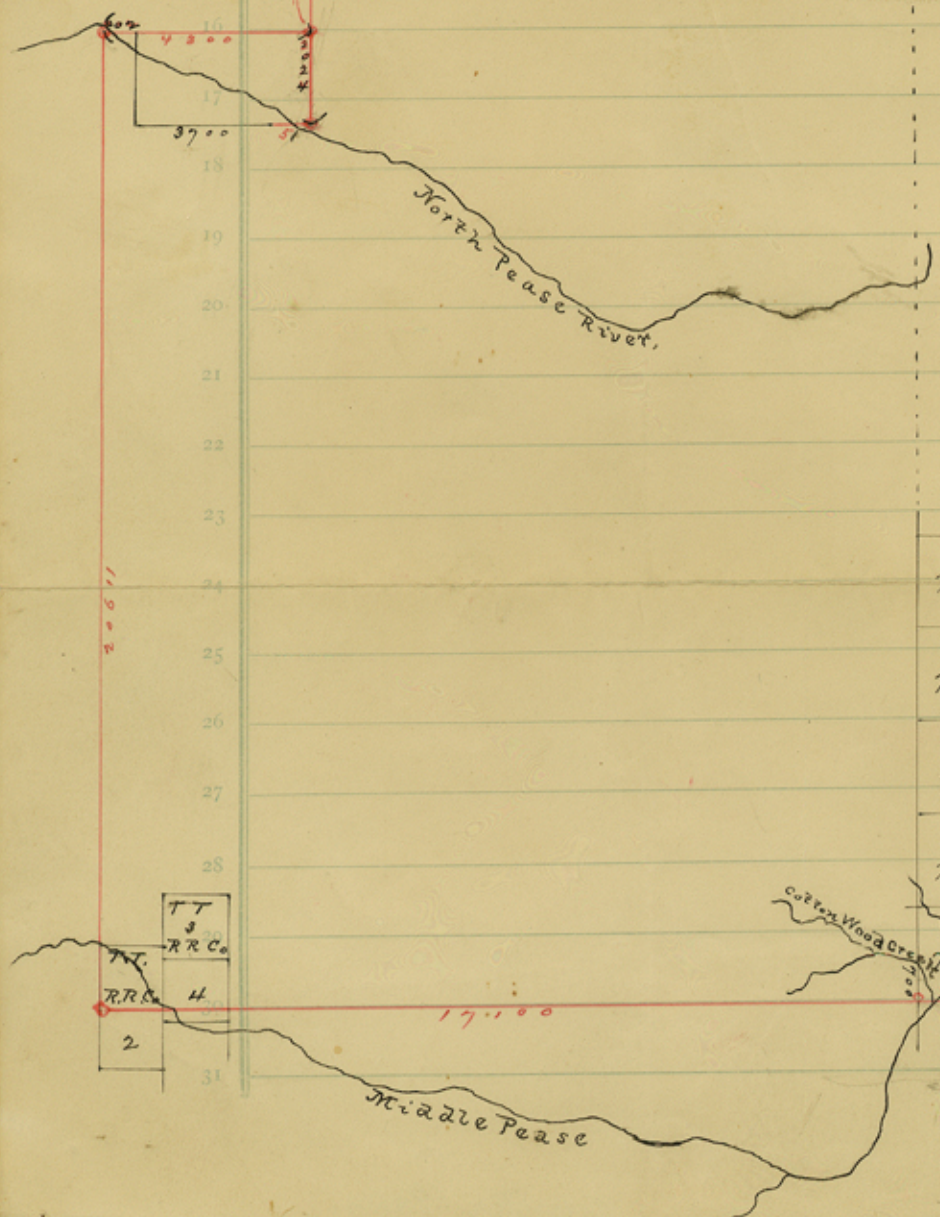
Sam L Chalk  
Surveyor Baylor Land Dist  
for W.A. Jones Spec Dept.

J. B. Lippincott & Co.,  
 Booksellers and Stationers,  
 Philadelphia, Pa.



22601  
 24625

Block H.  
 W. & A. W. R. R. Co.



400/24625/12  
 171100  
 31  
 10040  
 10040

J  
 Forsythe  
 35 36  
 Owl Spring

Counter 19482

Cottle & Childress Co.

Connections filed  
in the General Land Off.  
from February 16<sup>th</sup> 1884.

D. Robinson  
Chf Clerk.

Sam L. Chalk's connections

cc  
Mrs Shelly

Plain Copy for Mr. [unclear]  
[unclear] July 21/84  
[unclear]

See sk. file of  
Deardeman Co

counter 19483